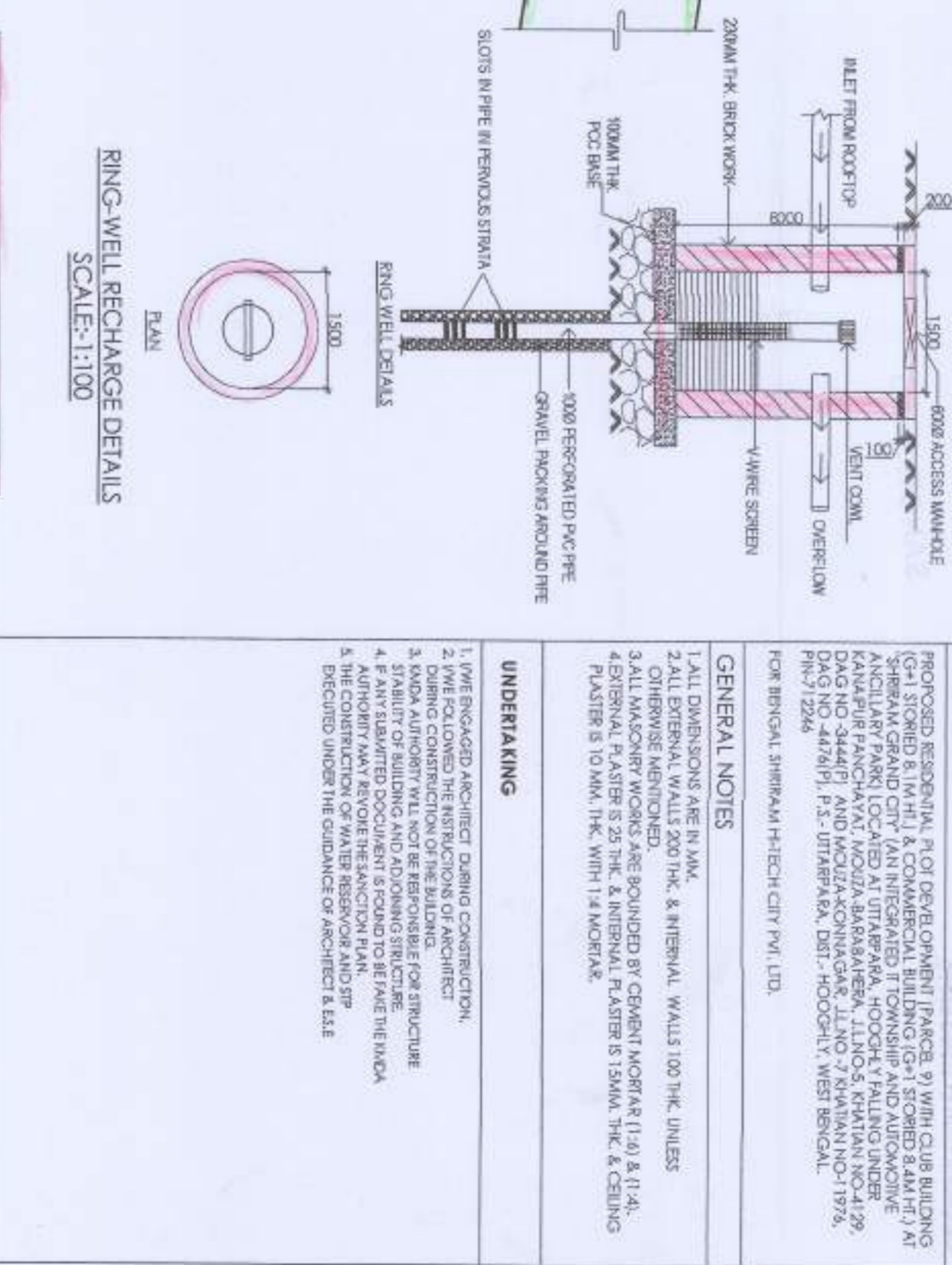
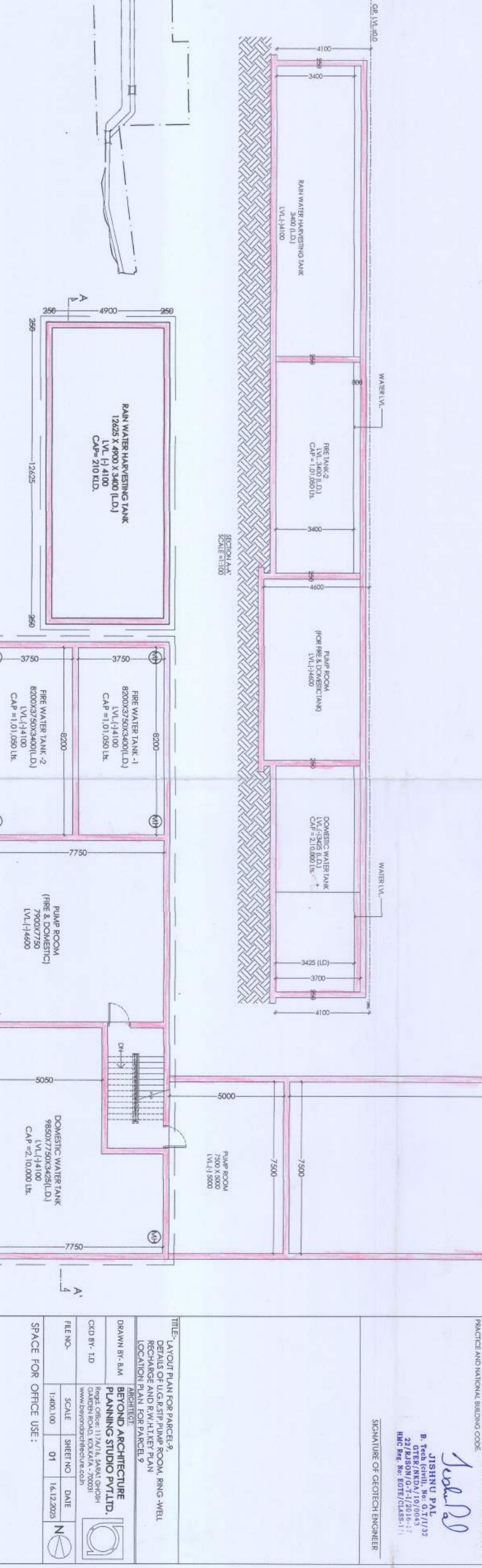
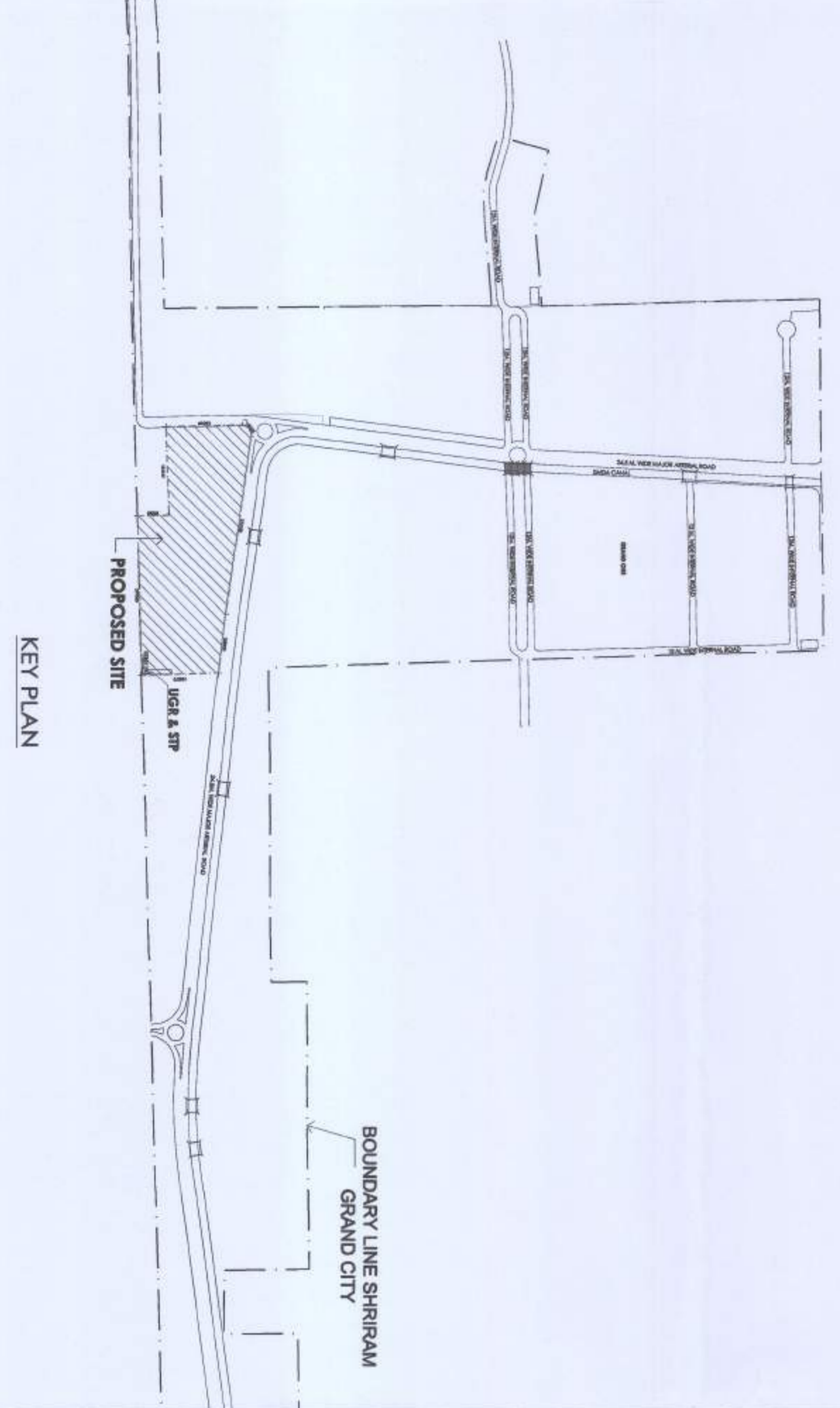
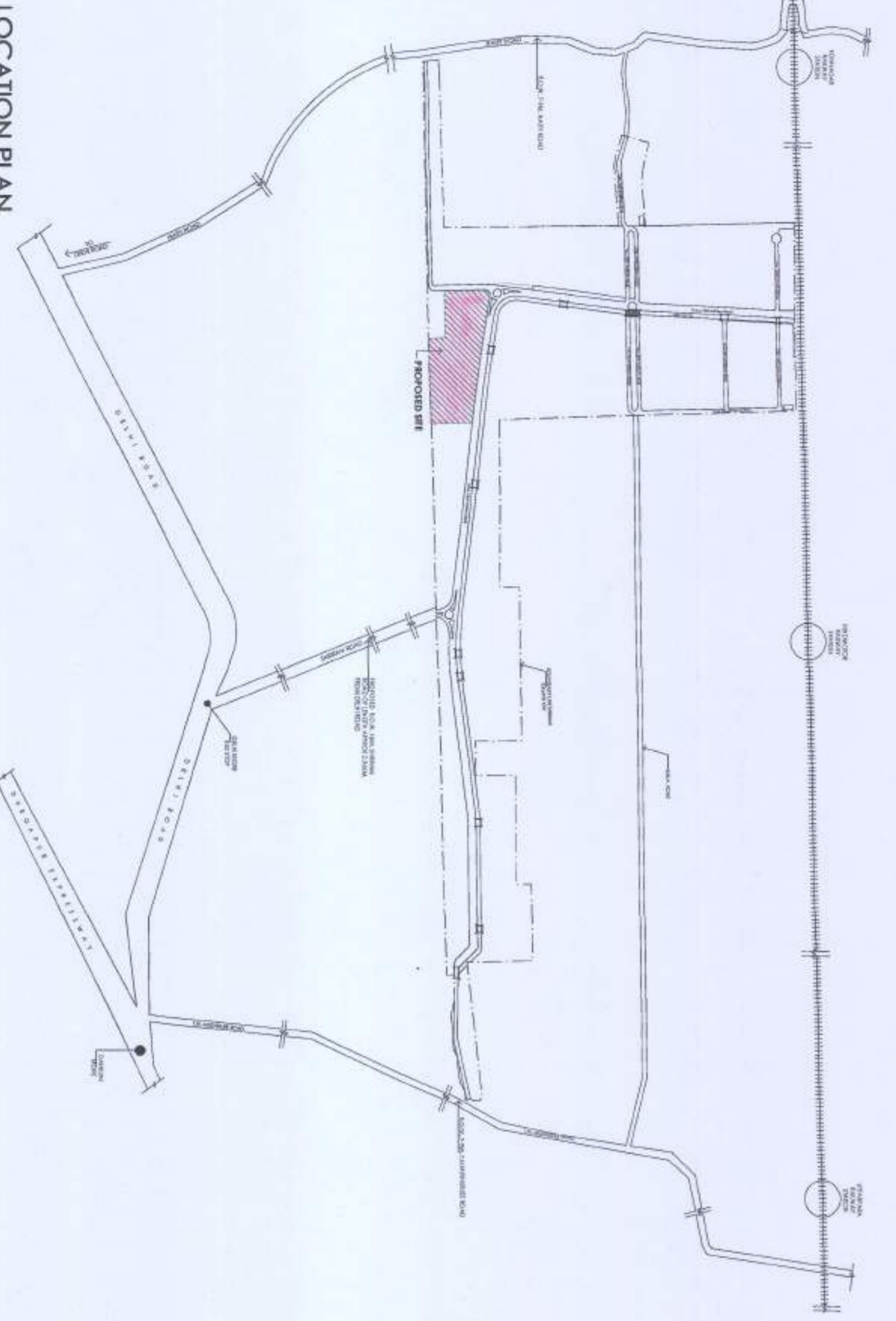


TOTAL REQUIRED ELECTRICAL LOAD			
TOTAL REQUIRED ELECTRICAL LOAD	=	3170	KVA
SOLAR POWER REQUIREMENT (1% OF TOTAL LOAD)	=	32	KWP
TOTAL AREA OF 64 NOS @500 WATT SOLAR PLATE PROVIDED	=	4480	SQFT
TOTAL SOLAR POWER PROVIDED	=	32	NOS.

AREA STATEMENT				
TOTAL AREA OF LAND	16.17	ACRE	65437.7262	SQ.M.
PROPOSED GROUND COVERAGE=	2.28%		1493.46	SQ.M.
PROPOSED F.A.R AREA	0.04		2646.04	SQ.M.
PROPOSED F.A.R AREA	2.989		86	SQ.M.
PROPOSED TOTAL BUILTUP AREA	24.5		32,182.85	SQ.FT.
ROAD WIDTH=				

LAND USE AREA STATEMENT			
DESCRIPTION	SQ. M	ACRE	
TOTAL LAND AREA	65437.7262	16.17	
TOTAL RESIDENTIAL PLOT AREA	38719.0	9.57	59.17%
PRE-ASSIGN GREEN	688.1	0.17	1.05%
PROPOSED GREEN	5448.55	1.35	8.33%
COMMERCIAL AREA	2239.750	0.55	3.42%
SERVICE AREA	1940.57	0.48	2.97%
CLUB AREA	1097.530	0.27	1.68%
ROAD AREA	15304.1862	3.78	23.39%
TOTAL	65437.7262	16.17	100.00%

PLOTTING OF PARCELS 9			
SIND	AREA (KATHA)	NO OF PLOTS	AREA(SQ.M)
1	1.47-2.99	156	21884.81
2	2.00-2.99	64	13421.86
3	3.00-3.99	15	3184.17
4	4.00-4.99	1	284.15
TOTAL		236	38719.00



FOR THE CLIENT: SHRI SRI ENTERPRISES PVT. LTD. (M/S)

FOR THE ARCHITECT: ARCHITECT M/S. SRI SRI ENTERPRISES PVT. LTD. (M/S)

FOR THE ENGINEER: SRI SRI ENTERPRISES PVT. LTD. (M/S)

FOR THE SURVEYOR: SRI SRI ENTERPRISES PVT. LTD. (M/S)

FOR THE CONSULTANT: SRI SRI ENTERPRISES PVT. LTD. (M/S)

FOR THE CONTRACTOR: SRI SRI ENTERPRISES PVT. LTD. (M/S)

FOR THE APPROVING AUTHORITY: SRI SRI ENTERPRISES PVT. LTD. (M/S)

FOR THE RECORD: SRI SRI ENTERPRISES PVT. LTD. (M/S)

FOR THE ARCHIVE: SRI SRI ENTERPRISES PVT. LTD. (M/S)

FOR THE LIBRARY: SRI SRI ENTERPRISES PVT. LTD. (M/S)

FOR THE MUSEUM: SRI SRI ENTERPRISES PVT. LTD. (M/S)

FOR THE GALLERY: SRI SRI ENTERPRISES PVT. LTD. (M/S)

FOR THE THEATRE: SRI SRI ENTERPRISES PVT. LTD. (M/S)

FOR THE CINEMA: SRI SRI ENTERPRISES PVT. LTD. (M/S)

FOR THE STADIUM: SRI SRI ENTERPRISES PVT. LTD. (M/S)

FOR THE GYM: SRI SRI ENTERPRISES PVT. LTD. (M/S)

FOR THE SPA: SRI SRI ENTERPRISES PVT. LTD. (M/S)

FOR THE RESTAURANT: SRI SRI ENTERPRISES PVT. LTD. (M/S)

FOR THE BAR: SRI SRI ENTERPRISES PVT. LTD. (M/S)

FOR THE CAFE: SRI SRI ENTERPRISES PVT. LTD. (M/S)

FOR THE SHOP: SRI SRI ENTERPRISES PVT. LTD. (M/S)

FOR THE OFFICE: SRI SRI ENTERPRISES PVT. LTD. (M/S)

FOR THE HOME: SRI SRI ENTERPRISES PVT. LTD. (M/S)

FOR THE SCHOOL: SRI SRI ENTERPRISES PVT. LTD. (M/S)

FOR THE COLLEGE: SRI SRI ENTERPRISES PVT. LTD. (M/S)

FOR THE UNIVERSITY: SRI SRI ENTERPRISES PVT. LTD. (M/S)

FOR THE HOSPITAL: SRI SRI ENTERPRISES PVT. LTD. (M/S)

FOR THE CLINIC: SRI SRI ENTERPRISES PVT. LTD. (M/S)

FOR THE PHARMACY: SRI SRI ENTERPRISES PVT. LTD. (M/S)

FOR THE BANK: SRI SRI ENTERPRISES PVT. LTD. (M/S)

FOR THE POST OFFICE: SRI SRI ENTERPRISES PVT. LTD. (M/S)

FOR THE POLICE STATION: SRI SRI ENTERPRISES PVT. LTD. (M/S)

FOR THE COURT: SRI SRI ENTERPRISES PVT. LTD. (M/S)

FOR THE JAIL: SRI SRI ENTERPRISES PVT. LTD. (M/S)

FOR THE PRISON: SRI SRI ENTERPRISES PVT. LTD. (M/S)

FOR THE MUSEUM: SRI SRI ENTERPRISES PVT. LTD. (M/S)

FOR THE GALLERY: SRI SRI ENTERPRISES PVT. LTD. (M/S)

FOR THE THEATRE: SRI SRI ENTERPRISES PVT. LTD. (M/S)

FOR THE CINEMA: SRI SRI ENTERPRISES PVT. LTD. (M/S)

FOR THE STADIUM: SRI SRI ENTERPRISES PVT. LTD. (M/S)

FOR THE GYM: SRI SRI ENTERPRISES PVT. LTD. (M/S)

FOR THE SPA: SRI SRI ENTERPRISES PVT. LTD. (M/S)

FOR THE RESTAURANT: SRI SRI ENTERPRISES PVT. LTD. (M/S)

FOR THE BAR: SRI SRI ENTERPRISES PVT. LTD. (M/S)

FOR THE CAFE: SRI SRI ENTERPRISES PVT. LTD. (M/S)

FOR THE SHOP: SRI SRI ENTERPRISES PVT. LTD. (M/S)

FOR THE OFFICE: SRI SRI ENTERPRISES PVT. LTD. (M/S)

FOR THE HOME: SRI SRI ENTERPRISES PVT. LTD. (M/S)

FOR THE SCHOOL: SRI SRI ENTERPRISES PVT. LTD. (M/S)

FOR THE COLLEGE: SRI SRI ENTERPRISES PVT. LTD. (M/S)

FOR THE UNIVERSITY: SRI SRI ENTERPRISES PVT. LTD. (M/S)

FOR THE HOSPITAL: SRI SRI ENTERPRISES PVT. LTD. (M/S)

FOR THE CLINIC: SRI SRI ENTERPRISES PVT. LTD. (M/S)

FOR THE PHARMACY: SRI SRI ENTERPRISES PVT. LTD. (M/S)

FOR THE BANK: SRI SRI ENTERPRISES PVT. LTD. (M/S)

FOR THE POST OFFICE: SRI SRI ENTERPRISES PVT. LTD. (M/S)

FOR THE POLICE STATION: SRI SRI ENTERPRISES PVT. LTD. (M/S)

FOR THE COURT: SRI SRI ENTERPRISES PVT. LTD. (M/S)

FOR THE JAIL: SRI SRI ENTERPRISES PVT. LTD. (M/S)

FOR THE PRISON: SRI SRI ENTERPRISES PVT. LTD. (M/S)